

A Newsletter from Paris



N° 1 _ A blond agate snuff bottle, very well hollowed, carved on one side through the dark skin with Liu Hai dancing with his string of cash above his three legged toad.

China, 1780-1860

H: 5,8 cm

Provenance: German Collection



N° 2 _ A white soft paste porcelain snuff bottle of cylindrical shape enamelled with polychrome enamels depicting a continuous scene of children playing in a garden. A four-character Hongxian mark. Coral stopper.

China, 1915-1916

H : 5,5 cm

Provenance : French Collection



N° 3 _ A blue overlay snuff bottle with a circular panel on each side enclosing a different horse on a bank of pierced rocks beneath a willow tree, the shoulders with small mask and ring handles.

China, 1750-1820

H : 5,6 cm

Provenance : Collection du Commandeur

Robert Kleiner -2001



N°4 _ A blue and red porcelain snuff bottle of cylindrical form depicting eighteen deers in a landscape of mountains and trees. Apocryphal Yongzheng mark.

China 19th century

H: 5,7 cm

Provenance : French Collection



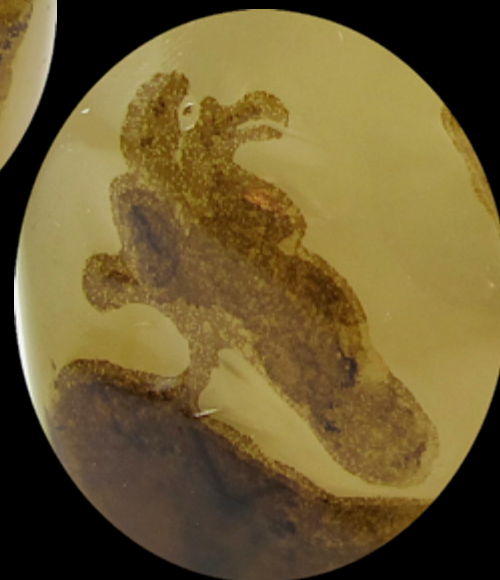
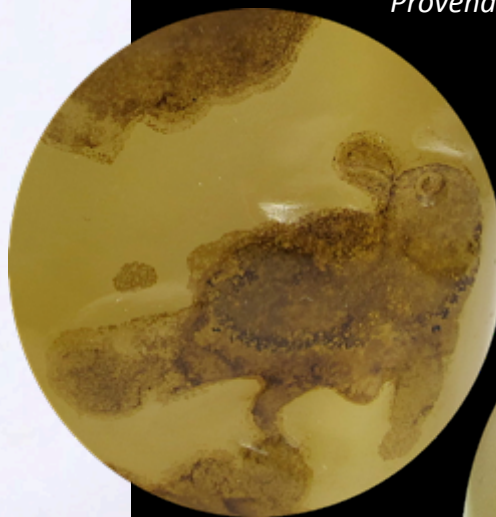


N°5 _ A honey-brown agate bottle, of flattened rectangular form with rounded shoulders, with a « silhouette » scenery, finely carved using a brown vein with two birds standing on a rock beneath a tree.

1750-1850

H: 7,4 cm

Provenance : French Collection



N°6 _ A glass snuff bottle of flattened rectangular form painted inside with Zhong Kui riding on a sedan chair supported on the shoulders by two devils in a procession on one side; the reverse with four devils. The theme of this painting is Zhong Kui marrying his sister and driving devils away from the house.
China, signed Ye Zhongsan and dated 1899.

H : 5,7 cm

*Provenance : Collection du Commandeur
Sotheby's Londres 1995*



N°7 _ A Canton enamel snuff bottle, the white ground painted with a polychrome scene depicting a boy on a buffalo on one side and a scholar with his assistant on the other.

China, Canton, 19th century

H : 6,4 cm

*Provenance : Collection du Commandeur
Oriental Art, London*



N° 8 _ A porcelain snuff bottle of baluster shape, painted in a continuous scene with thirty magpies amidst the branches of two prunus trees, one with greenish-white flowers, the other with pink flowers. The base unglazed.

China, 1790-1820

H: 6,8 cm

Provenance : French Collection





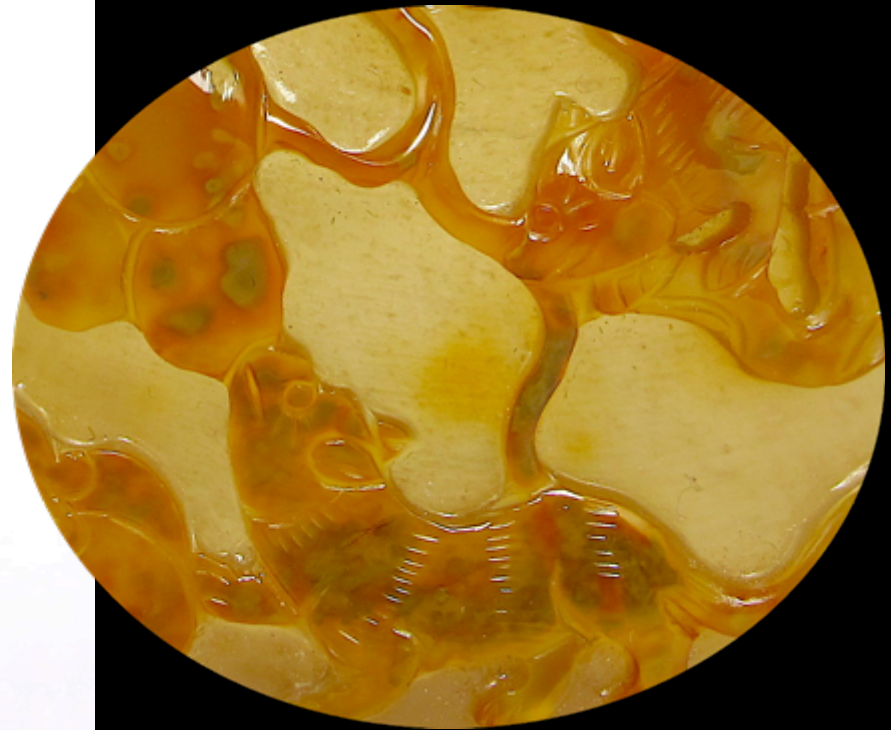
N° 9 _ An agate snuff bottle of flattened rectangular form carved using ochre skin with squirrels clambering amongst vines from which gourds issue.

China, 1780-1850

H: 5,7 cm

*Provenance: Vente Ader-picard-Tajan -Drouot – Paris - 13
novembre 1975 - N° 125*

White Orchid Collection, Paris



N° 10 _ A porcelain snuff bottle of flattened rounded form painted in “famille rose” and gold enamels illustrating the subjugation of Qing dissident Zhang Ge’er; one side with a battle scene; the reverse with a trial scene. The shoulders with mask-and-ring handles.

The base enamelled with the mark “Yongle tang” (Hall of Eternal Happiness)

China, Daoguang period 1821-1850

H: 6 cm

Provenance: French Collection





N° 11 _ A chalcedony-quartz snuff bottle or flattened rectangular form, the stone with grey and brown inclusions carved in low relief using the vein with a squirrel and a grapevine on one side; the reverse with three crabs.

China, 1780-1850

H: 6,8 cm

Provenance: French Collection



N° 12 _ A polychrome porcelain snuff bottle molded in the form of a squirrel resting on a bunch of grapes with crisply incised details of fur beneath a green glaze. They eyes picked out in black.

China, 1800-1880

L: 6 cm

Provenance : Belgian Collection





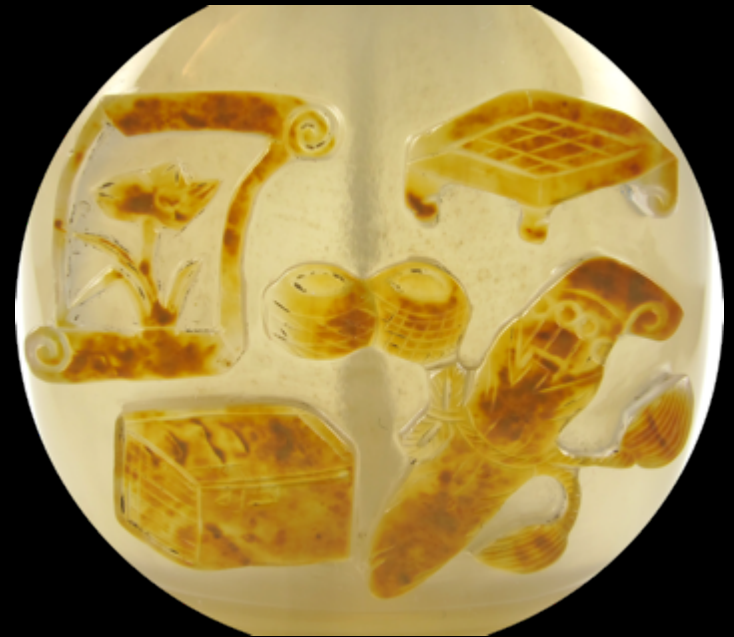
N° 13 _ A blond agate snuff bottle, very well hollowed, carved through the ochre skin with

scholar's objects

China, 1750-1860

H : 6 cm

Provenance: Italian Collection



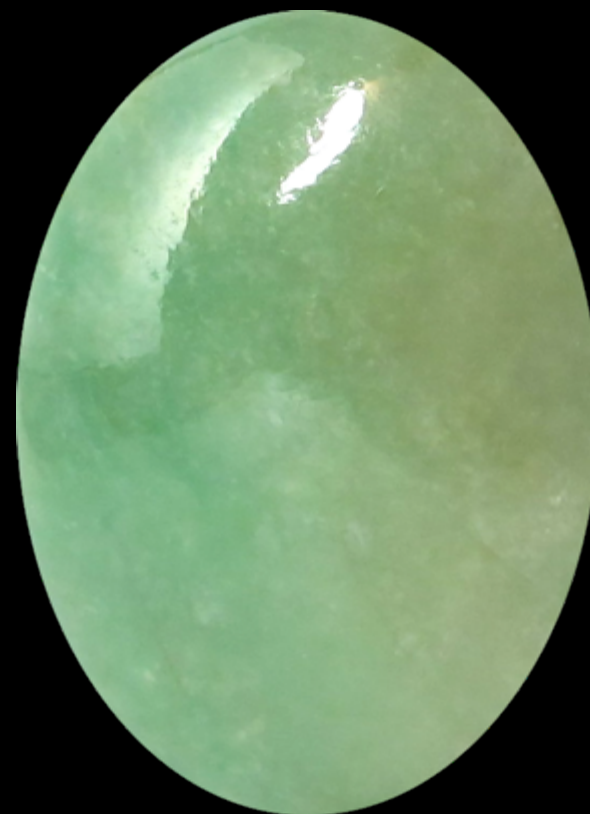


N° 14 _ A green jade snuff bottle of compressed spherical form, well hollowed, with a flat foot and concave lip.

China, 1780-1880

H: 5 cm

Provenance: French Collection



N° 15 _ An amethyst snuff bottle of fruit shape with leaves and tendrils, carved in high relief with two squirrels, one of white translucent tone, the other in purple tone. A branch is cleverly carved to form the foot of the bottle. Nice blue enamelled silver stopper.

China, 19th century

H: 5 cm

Provenance: Italian Collection

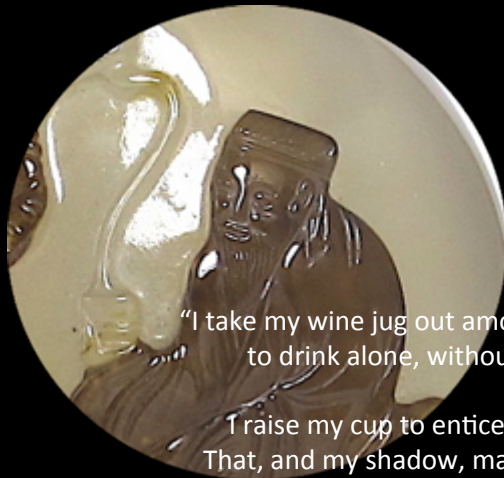


N° 16 _A blond agate snuff bottle of spade shape, carved on one side using a brown vein with the Tang poet Li Bai (701-762) and a bat flying on the left side. The scene is probably the representation of his famous poem « Drinking alone in the moonlight »

China, 1860-1850

H: 5,5 cm

Provenance: Collection du Commandeur



"I take my wine jug out among the flowers
to drink alone, without friends.

I raise my cup to entice the moon.
That, and my shadow, makes us three.

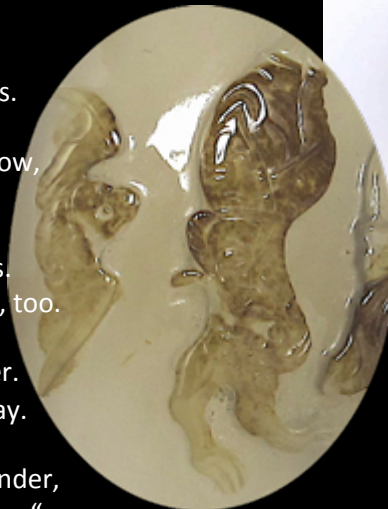
But the moon doesn't drink,
and my shadow silently follows.

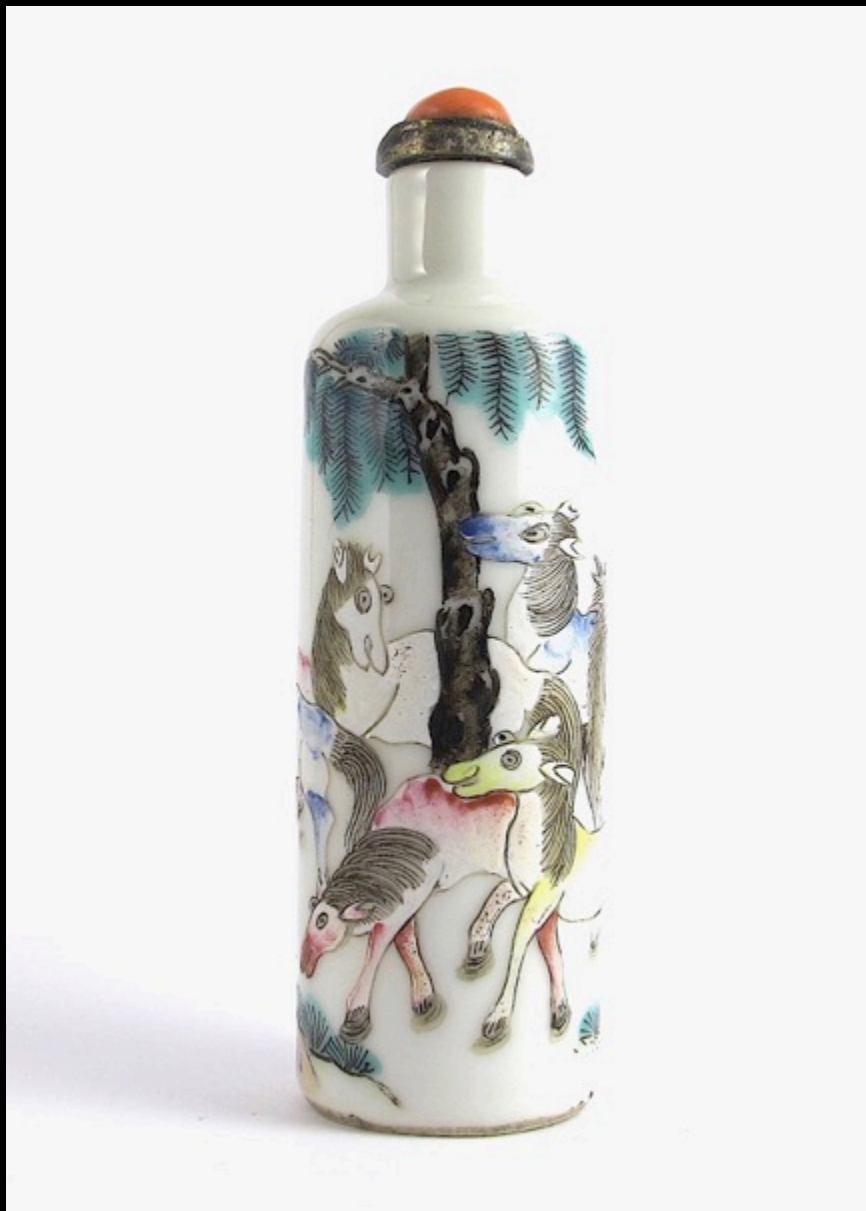
I will travel with moon and shadow,
happy to the end of spring.

When I sing, the moon dances.
When I dance, my shadow dances, too.

We share life's joys when sober.
Drunk, each goes a separate way.

Constant friends, although we wander,
we'll meet again in the Milky Way. "





N° 17 _ A porcelain snuff bottle of cylindrical form,
painted in "famille rose" enamels in a continuous
scene with the eight horses of Mu Wang.

Apocryphal Qianlong mark

China, 1800 -1860

H: 8,4 cm

Provenance: French Collection





N° 18 _ A glass snuff bottle imitating realgar, carved on each side with Liu Hai dancing with his string of cash above his three legged toad. A stylized border on each shoulder.

China, 1780-1850

H: 5,4 cm

Provenance: French Collection



N° 19 _ A jasper snuff bottle of rounded shape, the stone with attractive green, ochre, yellow and reddish markings.
Impressive Mongolian gilt bronze stopper with two dragons and coral.

China, 19th century

H: 7 cm

Provenance : German Collection





N° 20 _ A glass snuff bottle of rounded shape supported on an oval footrim, suffused with ruby-coloured splashed beneath a clear overlay.

China, 1740-1800

H : 5,3 cm

Provenance: French Collection

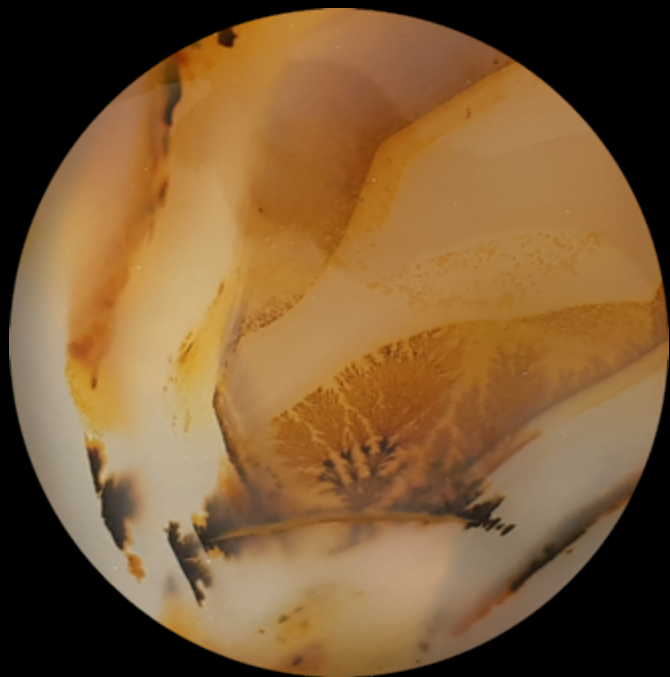


N° 21 _ A shadow agate snuff bottle, of flattened rectangular form, cleverly conceived utilizing the darker brown markings to suggest a tree and a bridge in a landscape. Well hollowed.

China, 19th century

H : 5,8 cm

Provenance: French Collection





N° 22 _ A "soft paste" porcelain snuff bottle of baluster shape painted in blue and white with a scene of the "Seven Sages of the Bamboo Grove".

Covered in a creamy crackled glaze.

China, 1800-1850

H: 6 cm

Provenance: French Collection



N° 23 _ An agate snuff bottle of flattened rectangular form carved in relief using the darker inclusions with a monkey holding a branch with a peach and standing on a rock with lingzhi. On the upper right a bat in flight appearing as a natural vein of the stone.

China, 1780-1850

H : 6 cm

Provenance: French Collection



N° 24 _ A white nephrite snuff bottle of finger citrus shape with foliage around the neck and running up to the sides.

China, 1750-1850

H: 6,3 cm

Provenance: Collection du Commandeur

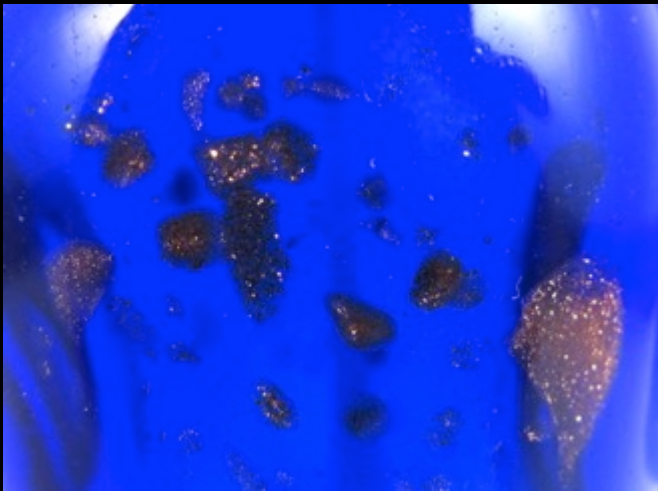


N° 25 _ A small transparent deep sapphire-blue glass snuff bottle of baluster form with surface inclusions of aventurine-glass. Yellow overlay mask-and-ring handles on each side in high relief.

China, 18th century

H: 4,7 cm

Provenance: French Collection





N° 26 _ Porcelain snuff bottle molded in the form of twin fish, with well detailed scales, glazed in iron-red, black and green enamels.

China, 1800-1850

H: 7,5 cm

Provenance : Belgian Collection





N° 27 _ An agate snuff bottle of flattened rectangular form carved in relief using the darker inclusions with a galloping "bannerman" holding the reins in its left hand and his banner across his shoulder with its right. The banner inscribed with the character "ling" (command) . On one shoulder is carved a "cartouche" with four character which read : "The red Flag of Victory" –

Qianlong victory of 1759.

Very well hollowed

China, 1759-1780

H: 5,8 cm

Provenance: Collection du Commandeur

Published : "Flacons-Tabatières de Chine " de la Collection du Commandeur, Paris Automne 2000 , n°37, p. 18

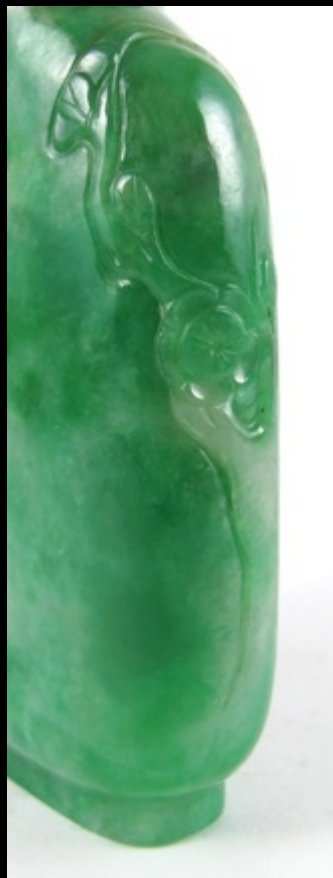


N° 28 _ A green jadeite snuff
bottle of flattened rectangular
form, carved with a flowering
prunus branch, cleverly using a
white inclusion.

China, 1750-1860

H : 6 cm

Provenance: Collection du Commandeur
Published : "Flacons-Tabatières de Chine "
de la Collection du Commandeur, Paris
Automne 2000 , n°33, p. 27

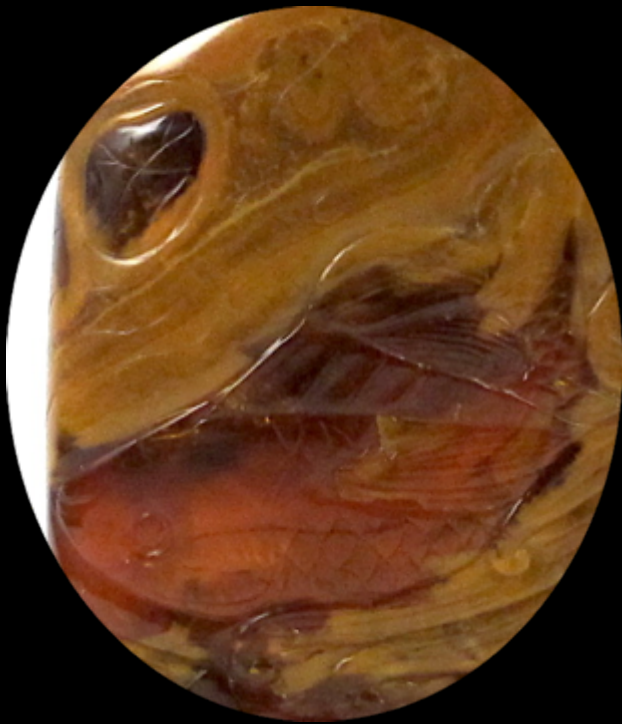


N° 29 _ A root amber snuff bottle of flattened rectangular form, the opaque material ranging in colour from golden-yellow to orange to red and used to depict an underwater scene with fish swimming in the flowing current amidst waves and lotus leaves.

China, 1780-1850

H : 6,2 cm

*Provenance : White Orchid Collection – Paris
Hong-Kong, 1950*



N° 30 _ Porcelain snuff bottle
molded and painted to depict Liu Hai
holding a string of cash over his
shoulders, his right foot raised and
resting on his three-legged toad.

China, 1800-1850

H: 7,5 cm

Provenance : Belgian Collection

